

# ACCOMMODATION

**Communal Entrance Lobby**

**Store Cupboard**

**Open Plan Kitchen/Dining/Living Room**

c4.5m x 7.2m (14'7" x 23'9")

**Bedroom 1** c5.3m x 3m (17'4" x 9'8")

**Bedroom 2** c5m x 2.7m (16'4" x 8'8")

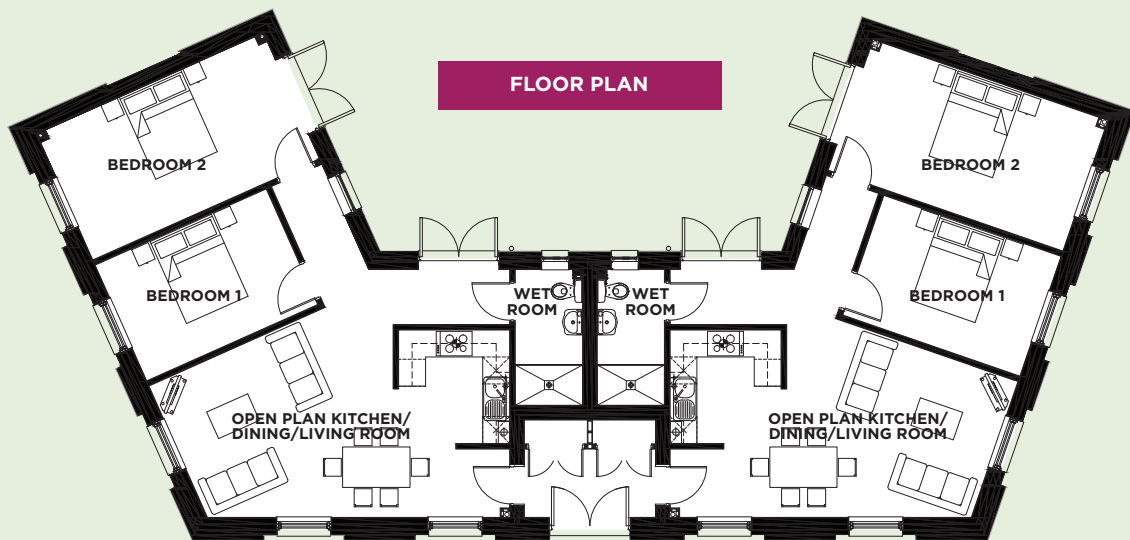
**Wet Room**



## OUTSIDE

**Allocated car parking space**

**Enclosed rear garden**



## SPECIFICATIONS

- **Communal entrance lobby** - with private storage cupboard and intercom system
- **Kitchen** - Neff oven with gas hob. Integrated fridge/freezer, washer/dryer and dishwasher. Shaker style kitchen units with laminate work surfaces. Stainless steel sink and drainer with chrome sink taps.
- **Flooring** - Kitchen/living room fitted with oak coloured 'Karndean' style flooring. Sand colour Startwist Elite carpet to bedrooms.
- **Decoration** - White emulsion to ceilings with contrasting white emulsion to walls
- **Tiling** - Full tiling to wet room walls with feature tiling to floors

*All details are correct at the time of print and do not form part of any contract.*